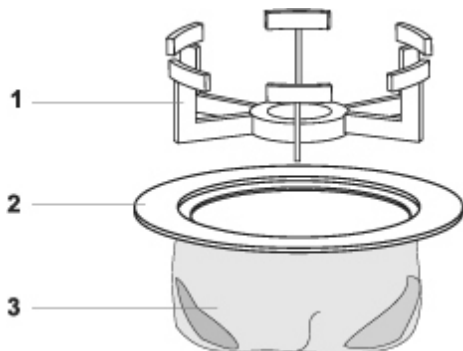
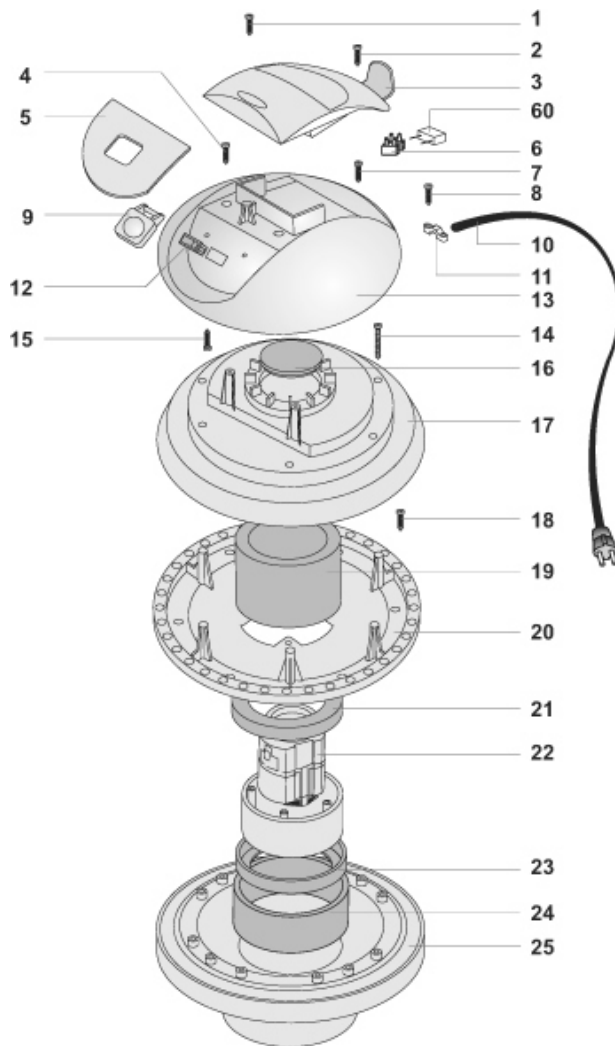


Head

Assembly Part No: 6051

POS	PART NUMBER	DESCRIPTION	#
1	VP01006	SCREW 5X20	2
2	VP01006	SCREW 5X20	2
3	VP06031	HANDLE	1
4	VP01006	SCREW 5X20	2
5	VP06032	FRONTAL	1
6	VP00450	TERMINAL BOARD 2 POLES	1
7	VP01006	SCREW 5X20	2
8	VP01006	SCREW 5X20	2
9	VP06034	PUSH BUTTON	1
10	VP00117 AUS	ELECTRIC CORD 2X1 MT.8,5 & PLUG	1
11	VP00139	CABLE CLAMP	1
12	VP06013	SWITCH	1
13	VP06033	TOP COVER	1
14	VP01050	SCREW 5X35	6
15	VP01005	SCREW 5X14	2
16	VP03383	COVERING CUP	1
17	VP06036	MOTOR COVER	1
18	VP01006	SCREW 5X20	6
19	VP03900	FOAM FILTER	1
20	VP06037	MOTORFASTENER	1
21	VP03935	MOTOR GASKET	1
22	VP03370 S	MOTOR 1000W	1
23	VP03901	MOTOR GASKET	1
24	VP06093	FILTER	1
25	VP03190 G	BASE SINGLE STAGE W/ GASKET	1
*	VP01101	CONNECTING WIRES	2
*	VP01106	CLIP	3
*	VP01103	FASTENER	1



Filter

Assembly Part No: 6053

POS	PART NUMBER	DESCRIPTION	#
1	VP02655	FILTER BASKET LAVIA	1
2	VP00507	FILTER RING 500	1
3	VP00124	FILTER BAG VH0151/101	1

Tank

Assembly Part No: 6040

POS	PART NUMBER	DESCRIPTION	#
1	VP02652 A	COMPLETE INLET MACHINE END	1
2	VP02846	GASKET D.38	1
3	VP02593	DEFLECTOR	1
4	VP02586	GASKET R 205	1
5	VP06038	PLAST TANK YES 202	1
6	VP01026	SCREW 5X30	4
7	VP01302	RIVET 5X19	4
8	VP03602	HOOK PLASTIC COMPLETE	2

Trolley

Assembly Part No: 6047

POS	PART NUMBER	DESCRIPTION	#
1	VP06045	TROLLEY BODY	1
2	VP01005	SCREW 5X14	4
3	VP06030	CASTOR WHEEL	2
4	VP02680	SCREW 4X15	8
5	VP01005	SCREW 5X14	8
6	VP06042	WHEEL SUPPORT	2
7	VP06043	WHEEL BODY	2
8	VP02557	BLOC D.18	2
9	VP06044	WHEEL COVERING	2

