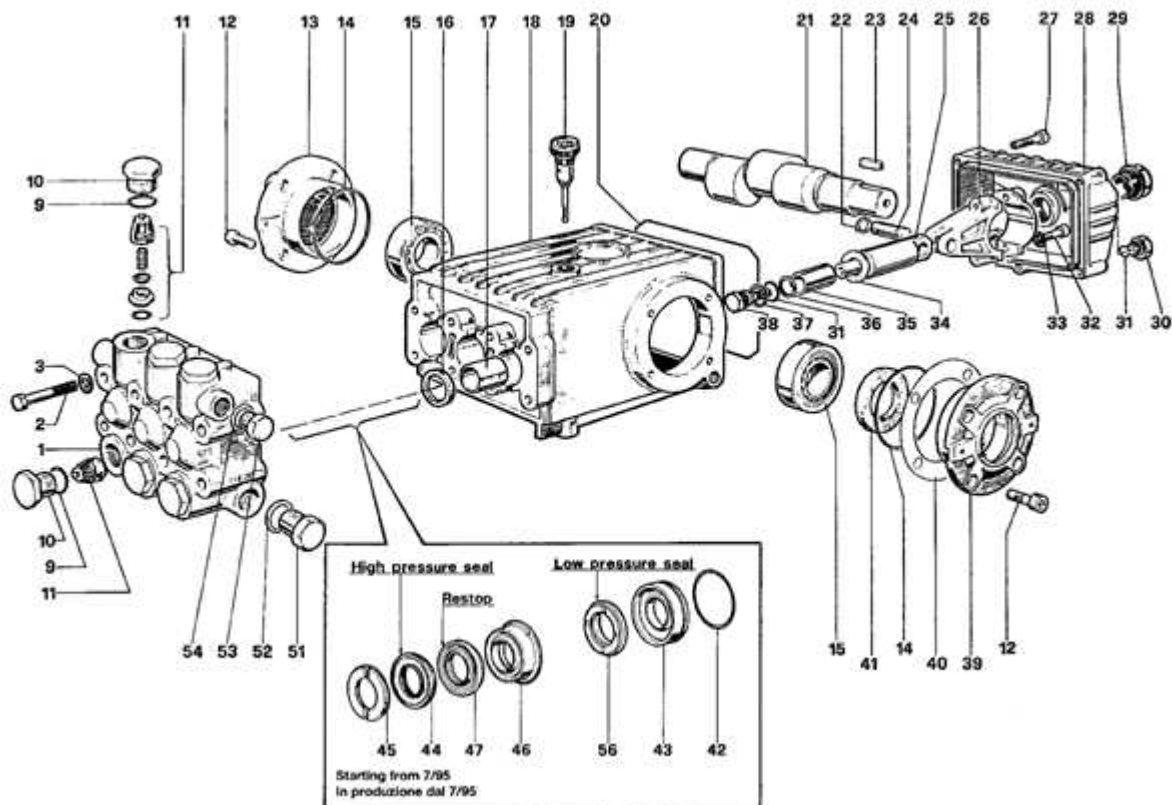


Royal Press DS 2880T - Pump



| Ref. | Part N. | Description |
|------|-----------|----------------------------------|
| 0001 | MFVR01097 | HEAD W 151 |
| 0002 | VTVT01111 | SCREW TE M 8X70 UNI 5737 |
| 0003 | VTRS01072 | WASHER D. 8 TC |
| 0009 | GUGO01033 | O-RING D. 20.24 X 2.62 NBR 90SH |
| 0010 | RCDS01087 | CAP M24X2X16 OTT |
| 0011 | VVAM01104 | VALVE UNIT W 70-151 |
| 0012 | VTVT01118 | SCREW TCEI 8X16 |
| 0013 | MFVR03576 | CRANKASE COVER W151 |
| 0014 | GUGO01041 | O-RING D. 67.95 X 2.62 NBR 70SH |
| 0015 | CUVR09205 | ROLLER BEARING 32206 A |
| 0016 | GUGO01000 | OIL SEAL 22X 32X 5.5 NBR70 |
| 0017 | PVVR01011 | BUSHING W 151 |
| 0018 | MFVR01013 | PUMP CRANKCASE W 151 |
| 0019 | PVVR01092 | OIL DIPSTICK W 151 |
| 0020 | GUGO34590 | O-RING D. 133.02 X 2.62 NBR 70SH |
| 0021 | ALMO41529 | SHAFT TS 1521 USA |
| 0022 | VTAE14016 | CIRCLIP D. 12 UNI 7435 |
| 0023 | VTVR41531 | KEY 8X 7X35 UNI 6604A |
| 0024 | PVVR01085 | GUDGEON D.13X35 W151 |
| 0025 | PVVR01029 | PISTON GUIDE W 151 |
| 0026 | BLVR01009 | CONNECTING ROD W 151 |
| 0027 | VTVT01116 | SCREW TCEI 6X30 UNI5931 |
| 0028 | MFVR03582 | CRANKASE COVER W 151 POS |
| 0029 | PVVR01083 | OIL INDICATOR G 3/4 W70-151 |
| 0030 | RCDS01088 | CAP 1/4X 9 M WW90 |
| 0031 | GUGO01036 | O-RING D. 10.82 X 1.78 NBR 70SH |
| 0032 | VTVT01120 | SCREW TCEI 8X35 UNI5931 |
| 0033 | VTRS14242 | WASHER D. 8.4X13X0.8 UNI7064 SCH |
| 0034 | VTRS01753 | WASHER D.14X28 X0,5 |
| 0035 | PIVR01066 | PISTON D.20X50 W 151 |
| 0036 | GUVR00994 | ANTI-EXTR.RING W151 |
| 0037 | VTRS01076 | WASHER D.14X18,5X0,5 |

| | | |
|------|-----------|--------------------------------|
| 0038 | PVVR01107 | PISTON BOLT IP W151 |
| 0039 | MFVR03583 | CRANKASE COVER W151 |
| 0040 | PVVR01016 | THICKNESS 0,1 W 151 |
| 0041 | GUGO01003 | OIL SEAL 30X 55X 7 NBR70 |
| 0042 | GUGO01042 | O-RING D. 34.6 X 1.78 NBR 70SH |
| 0043 | PVVR00977 | PACKING RETAIN.W151 |
| 0044 | GUVR00981 | PACKING W151 |
| 0045 | PVVR00985 | HEAD RING W151 |
| 0046 | PVVR34589 | INTERMED. RING W 151 D. 20 |
| 0047 | GUVR34587 | PACKING D. 20 RESTOP |
| 0051 | RCDS01091 | CAP 1/2X10 M |
| 0052 | VTRS01075 | WASHER D.21,5X27 ALL |
| 0053 | RCDS01090 | CAP 3/8X13 M WW90 |
| 0054 | VTRS01074 | WASHER D.17,5X23 X1,5 |
| 0056 | GUVR34585 | PACKING W 151 L.P. |