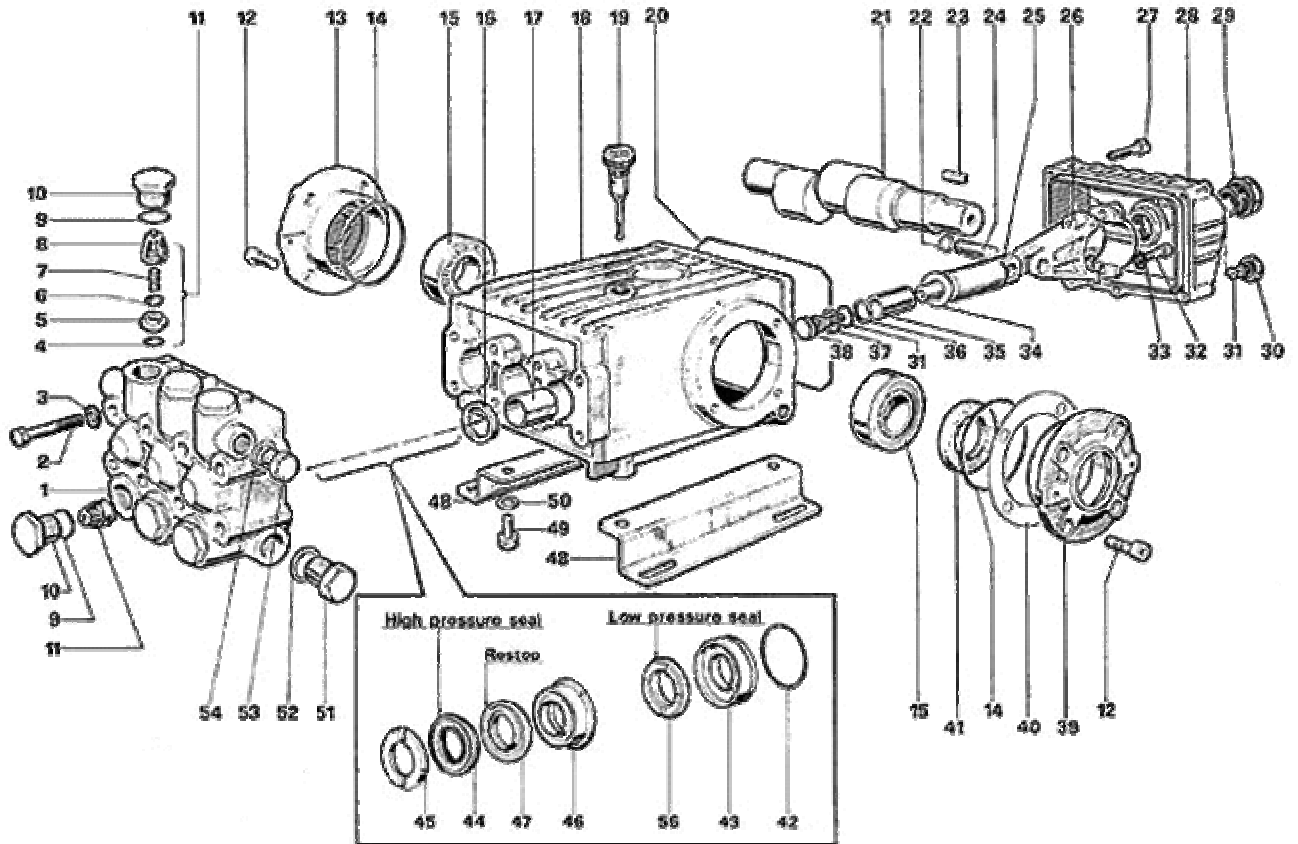


WS 102, WS131, WS151, WS171



Kit Chart

| Kit N. | code | description | Pos. included | N. Pcs. |
|--------|----------|--------------------------------|----------------------|---------|
| 001 | 34000101 | KIT 1 INTAKE/DELIVERY VALVE | 4 5 6 7 8 | 6 |
| 002 | 34000201 | KIT 2 OIL SEAL D. 22X32X5,5 | 16 | 3 |
| 003 | 34000301 | KIT 3 OIL SEAL D.30X55X7 | 41 | 2 |
| 004 | 34000401 | KIT 4 INTAKE/DEL. VALVE CAPS | 9 10 | 6 |
| 006 | 34000601 | KIT 6 PISTON BOLT | 31 34 36 37 38 | 3 |
| 007 | 34000701 | KIT 7 HEAD RING D.20 | 45 | 6 |
| 010 | 34001001 | KIT 10 PACKING RETAINER D.20 | 42 43 | 3 |
| 028 | 34002801 | KIT 28 COMPL.SEAL FOR PIST.D20 | 42 43 44 45 46 47 56 | 1 |

| | | | | |
|-----|----------|-------------------------------|----------|---|
| 069 | 34006901 | KIT 69 PACKING D.20 W/RESTOP | 44 47 56 | 3 |
| 071 | 34007101 | KIT 71 INTERMEDIATE RING D.20 | 46 47 | 3 |

Parts Detail

| Pos. | code | description | N. Pcs. |
|------|----------|--------------------------|---------|
| 1 | 47120141 | MANIFOLD | 1 |
| 2 | 99320600 | SCREW M 8x70 UNI 5737 | 8 |
| 3 | 96702000 | WASHER 8,4X15X1,5 | 8 |
| 4 | 90384100 | O-RING 17,13X2,62 (3068) | 6 |
| 5 | 36200366 | VALVE SEAT | 6 |
| 6 | 36200176 | VALVE PLATE | 6 |
| 7 | 94737600 | SPRING D. 9,4X14,8 | 6 |
| 8 | 36200251 | VALVE CAGE | 6 |
| 9 | 90384700 | O-RING 20,24X2,62(3081) | 6 |
| 10 | 98222000 | CAP M24X2X16 | 6 |
| 11 | 36703201 | VALVE ASSY. | 6 |
| 12 | 99303900 | SCREW M 8x16 UNI 5931 | 8 |
| 13 | 47150122 | CRANKCASE COVER | 1 |
| 14 | 90391300 | O-RING 67,95X2,62 (3268) | 2 |
| 15 | 91837500 | TAPER BEARING | 2 |
| 16 | 90162500 | OIL SEAL 22x35x5,5 | 3 |
| 17 | 90912600 | BUSHING 22X25X30 | 3 |
| 18 | 47010022 | CRANKCASE | 1 |
| 19 | 98210600 | OIL DIP-STICK G3/8X80 | 1 |

| | | | |
|----|----------|------------------------------|---|
| 20 | 90392200 | ORING D.133,02 X 2,62(3525) | 1 |
| 21 | 47020435 | CRANKSHAFT C.16 S.p.f. | 1 |
| 22 | 90055700 | CIRCLIP D.12 UNI 7435 | 6 |
| 23 | 91487800 | KEY 8X7X25 | 1 |
| 24 | 97738000 | CONNECTING-ROD PIN D.13X35,5 | 3 |
| 25 | 47050554 | PISTON GUIDE | 3 |
| 26 | 47030001 | CONNECTING ROD | 3 |
| 27 | 99191200 | SCREW M 6x30 UNI 5931 | 5 |
| 28 | 47160122 | CRANKCASE COVER | 1 |
| 29 | 97596800 | OIL LEVEL INDICATOR G3/4X15 | 1 |
| 30 | 98204100 | PLUG G1/4X9 | 1 |
| 31 | 90358500 | O-RING 10,82X1,78 (2043) | 4 |
| 32 | 99309900 | SCREW M 8x35 UNI 5931 | 6 |
| 33 | 96701400 | WASHER 8,4X13X0,8 | 6 |
| 34 | 96728600 | WASHER 14X28X0,5 | 3 |
| 35 | 47040409 | PISTON D. 20x50 | 3 |
| 36 | 90506700 | ANTI-EXTRUSION RING | 3 |
| 37 | 96728000 | WASHER 14X18,5X0,5 | 3 |
| 38 | 47219566 | PISTON SCREW | 3 |
| 39 | 47150022 | CRANKCASE COVER | 1 |
| 40 | 97567800 | SHIM D.74,5X104X0,1 | 2 |
| 41 | 90164800 | OIL SEAL 30x55x7 | 1 |
| 42 | 90361600 | O-RING 34,65X1,78 (2137) | 3 |

| | | | |
|----|----------|----------------------------|---|
| 43 | 47080570 | PACKING RETAINER D. 20x35 | 3 |
| 44 | 90270500 | PACKING 20x35x5,5 | 3 |
| 45 | 47100051 | HEAD RING D. 20 | 3 |
| 46 | 47216970 | INTERM.RING D. 20 (SPEC.) | 3 |
| 47 | 90270400 | RESTOP RING D. 20 TYPE 6/1 | 3 |
| 48 | 47200074 | PUMP FOOT | 2 |
| 49 | 99364400 | SCREW M 10x18-5931 | 4 |
| 50 | 96710600 | WASHER 10,2 | 4 |
| 51 | 98217600 | PLUG G1/2X10 | 1 |
| 52 | 96751400 | WASHER 21,5X27X1,5 | 1 |
| 53 | 98210000 | PLUG G3/8X13 | 1 |
| 54 | 96738000 | WASHER 17,5X23X1,5 | 1 |
| 56 | 90271000 | PACKING D.20X35X9 L.P. | 3 |