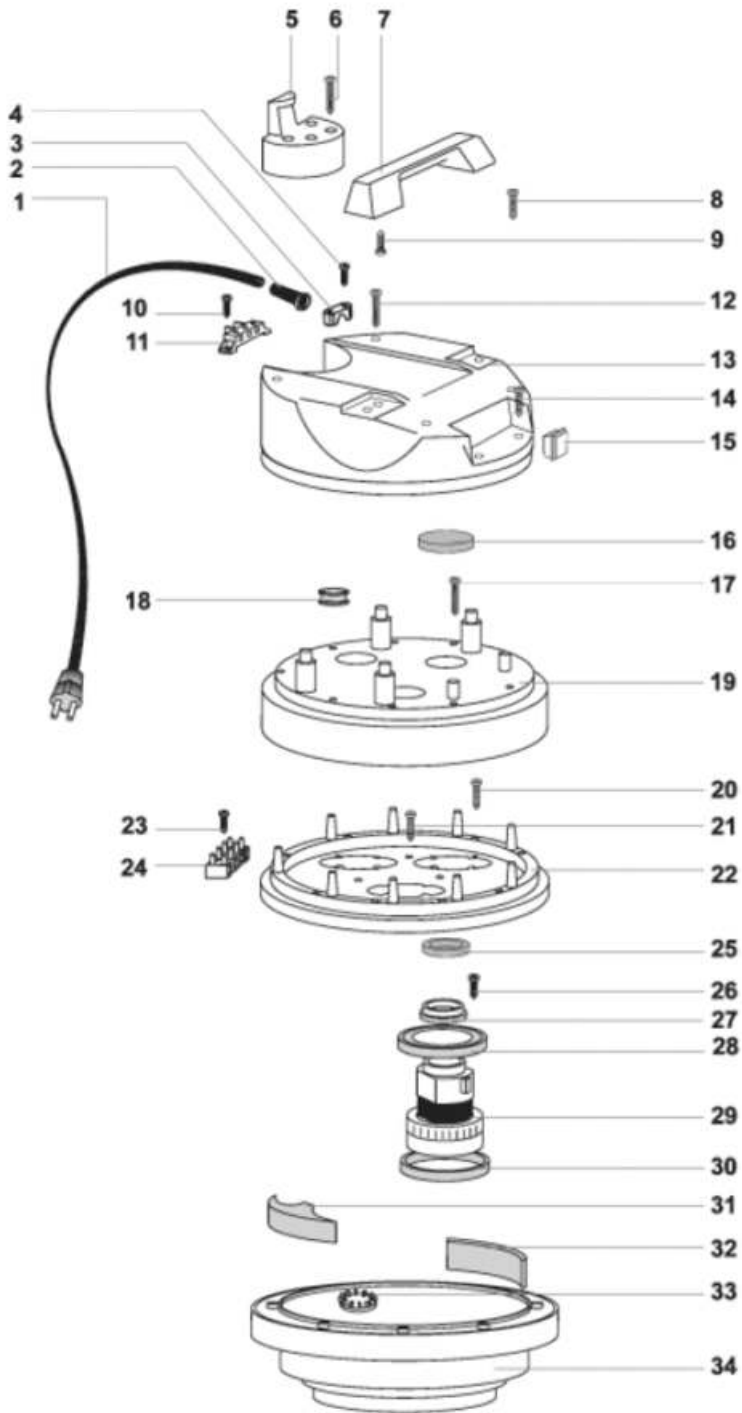


# KERRICK™ VH0640 MEC



## Head

Assembly Part No: 3063

POS	PART NUMBER	DESCRIPTION	#
1	VP04062 AUS	ELECTRIC CORD 2X1,5 (DOMO) & PLUG	1
2	VP00138	CABLE SLEEVE	1
3	VP00139	CABLE CLAMP	1
4	VP01006	SCREW 5X20	2
5	VP03032	CABLE HOOK	1
6	VP01054	SCREW 5X50	4
7	VP03034	HANDLE MEC 600	1
8	VP01050	SCREW 5X35	2
9	VP01006	SCREW 5X20	4
10	VP01005	SCREW 5X14	2
11	VP00490	TERMINAL BLOCK "G"	1
12	VP01054	SCREW 5X50	2
13	VP03061	COVER MEC 600 3 MOTORS	1
14	VP01006	SCREW 5X20	2
15	VP00484	ANTISPLASH SWITCH	3
16	VP03937	FILTER MTP/65 H=15 D95	3
17	VP01054	SCREW 5X50	9
18	VP01502	GUIDING SLIT FOR QUICK COUPLING	1
19	VP02957	COVERING NEVADA 600 3 MOTORS	1
20	VP02627	SCREW 5X40	9
21	VP02627	SCREW 5X40	3
22	VP02937	MOTORFASTENER NEVADA 600	1
23	VP01004	SCREW "TC" 4,3X19	1
24	VP02959	TERMINAL BOARD 6 POLES	1
25	VP03969	WASHER H8 D85X65	3
26	VP01006	SCREW 5X20	12
27	VP00310	PLASTIC RING FOR MOTOR 1200 W.	3
28	VP03901	MOTOR GASKET	3
29	VP03891 S	MOTOR 1000W	3
30	VP03901	MOTOR GASKET	3
31	VP03454	NOISE FILTER	3
32	VP03456	NOISE FILTER	3
33	VP00468	AUTOMATIC VALVE	3
34	VP03108	BASE 600/400	1
*	VP01101	CONNECTING WIRES	12
*	VP01106	CLIP	4

## Filter

Assembly Part No: 4246

POS	PART NUMBER	DESCRIPTION	#
1	VP03706	PLASTIC SLEEVE D.8	4
2	VP03724	SCREW SS 5X25 PHILIPS ANTIFOAM	4
3	VP02823	ANTI FOAM BODY 99	1
4	VP03117	FILTER NET 0,3 D.90 H=58	1
5	VP02676	HIGHER FLOAT 99	1
6	VP00473	FILTER RING 400	1
7	VP02845	FILTER CONICAL POLY. 400	1
8	VP02833	BASKET CONICAL 400	1
9	VP02852	FILTER CANISTER CARTRIDGE D.175X145X163	1
10	VP02855	RING FOR FILTER COMPLETE	1

