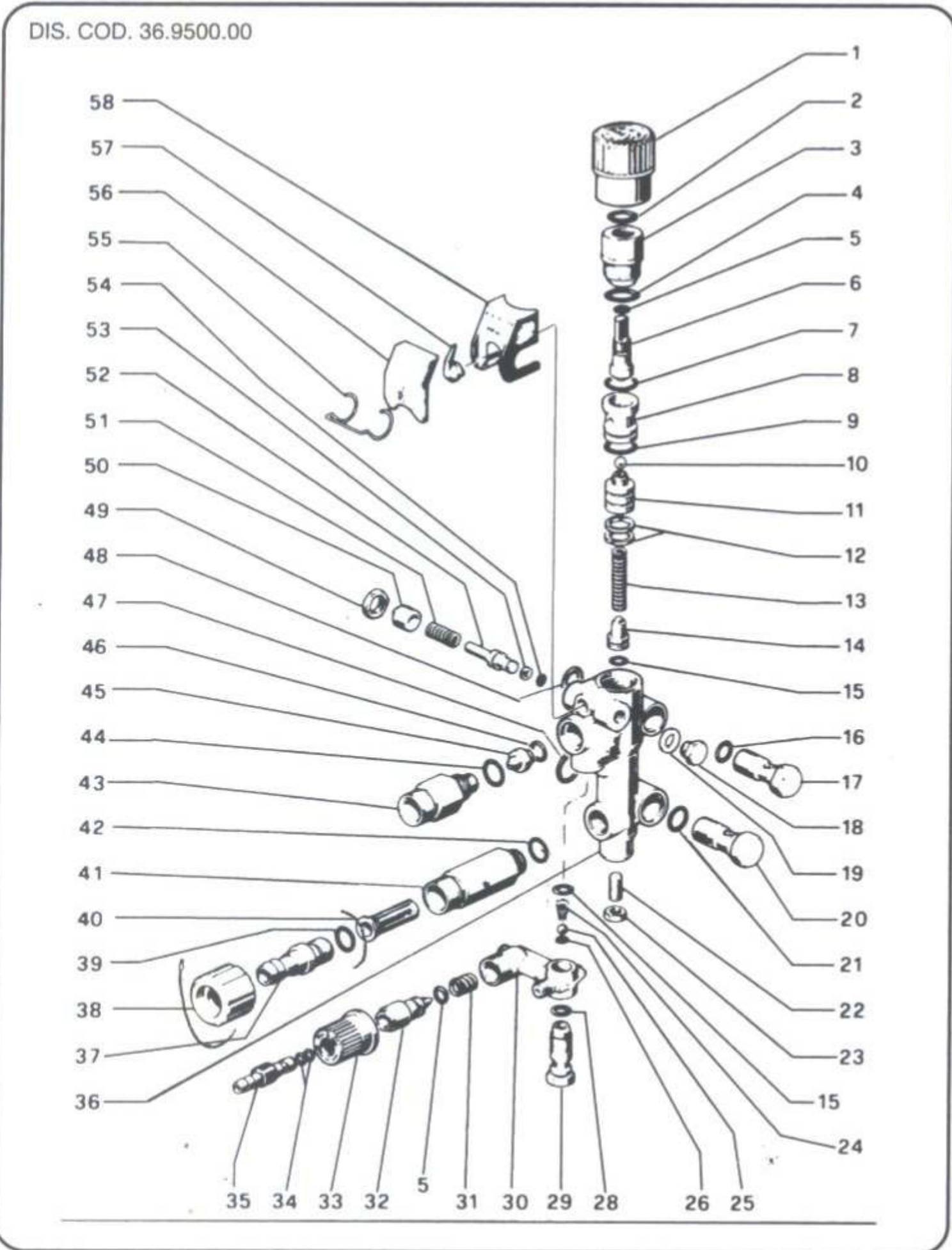


KR - KR 890 KR 100

KIT N.	KIT 94	KIT 95 (KR)	KIT 99 (KR 90-100)
Positions included	5-15-24-25-26-28 31-34-44-46	2-4-5-7-8-9-10-12 13-15-16-21-39-42 47-48-53-54	2-4-5-7-8-9 10-12-13-15 16-21-39-42 47-48-53-54
Posizioni incluse			
N. pcs.	1	1	1

POS.	CODE CODICE	N. PCS.
1	36.2583.51	1
2	90.3835.00	1
3	36.2556.70	1
4	90.3847.00	1
5	90.3580.00	2
6	36.2574.02	1
7	90.3598.00	1
8	36.2554.66	1
9	90.3596.00	1
10	97.4802.00	1
11	TABLE «A» ***	
12	90.5080.00	2
13	94.7344.00	1
14	36.2552.70	1
15	90.3582.00	2
16	90.3820.00	1
17	36.2567.70	1
18	98.1966.00	1
19	96.7100.00	1
20	36.2568.70	1
21	90.3827.00	1
22	99.3054.00	1
23	92.2218.00	1
24	94.8217.00	1
25	97.4782.00	1
26	90.3572.00	1
28	90.3585.00	1
29	36.2563.70	1
30	36.2562.51	1
31	94.7383.00	1
32	36.2564.70	1
33	36.2565.51	1
34	90.3570.00	2
35	36.2566.70	1
36	36.2582.41 - KR	1
	36.2588.41 - KR90 -100	1
37	36.2569.70	1
38	10.0119.02	1
39	90.3828.00	1
40	92.8925.00	1
41	36.2560.70 - M22x1,5	1
	36.2584.70 - 1/2 NPT	1
42	90.3591.00	1
43	10.0147.70 - M22x1,5	1
	10.0318.70 - 3/8 NPT	1
44	90.3832.00	1
45	TABLE «A» ***	
46	90.3822.00	1
47	90.3839.00	1
48	90.3833.00	1
49	92.2492.00	1
50	36.2580.70	1
51	94.7338.00	1
52	36.2579.70 - KR	1
	36.2589.70 - KR90 -100	1
53	90.5007.00 - KR	1
	90.5004.00 - KR90 -100	1
54	90.3568.00 - KR	1
	90.3567.00 - KR90 -100	1
55	94.8718.00	1
56	36.2577.51	1
57	36.2578.51	1
58	36.2586.01 - KR	1
	36.2590.01 - KR90 -100	1



*** TABLE «A»

MOD.	POS.	CODE CODICE	N. PCS.	FOR PUMPS PER POMPE
KR1	11	36.2572.70	1	TURBO 8-70
	45	10.0307.51	1	TURBO 15-19-21
KR2	11	36.2553.70	1	TURBO 11-50
	45	10.0151.66	1	TURBO 11-70
KR90	11	36.2572.70	1	TURBO 8-90
	45	10.0307.51	1	
KR100	11	36.2595.70	1	TURBO 10-100
	45	10.0151.66	1	