

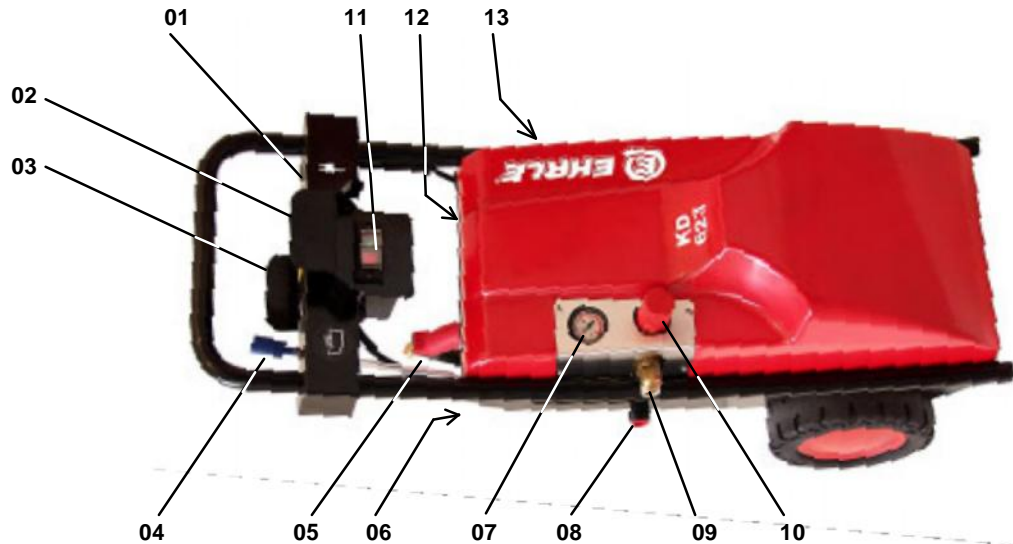
**High-Pressure-Cleaning-Systems****Operating Instruction****KD623**

Designation	KD 623	Unit
<b>Operating pressure:</b> Operating pressure: max. pressure: Standard nozzle /Color code Hi-Lo Nozzle: Standard nozzle / Color code Turbo Nozzle: max. suction level:	10-120 135 045 - orange 045 - orange 3,0	bar bar  mtr.
<b>Discharge capacity:</b>	11	l/min
<b>Temperature:</b> max. delivery temperature:	60	°C
<b>Electrical input:</b> Voltage (frequency): Connected load: Protection class:	AC 230-240 (50) 2,8 - (12,0) IP54	V (Hz) kW (A)
<b>Dimensions:</b> Lenght / Width / Height	960x372x396	mm
<b>Weight:</b> Net weight without accessories:	42	kg

**Warning! Observe Operating Instruction and Safety regulation for commissioning of the High Pressure Cleaner. The machine apply the CE-Regulations.**

# High-Pressure-Cleaning-Systems

## 1. Total View of the Machine and Description



01 Electrical plug  
02 Electrical cable mounting support  
03 H.P. hose mounting support  
04 Chemical suction hose c/w. filter  
05 H.P. trigger gun

06 Turbo-Nozzle  
07 Pressure gauge  
08 Water inlet  
09 H.P. outlet  
10 Unloader valve

11 On / Off switch  
12 Hi-Lo-Nozzle  
13 Accessory mounting support

## 2. Commissioning

1. Unpack the H.P. Cleaner and check for complete quantity and possible damages.
2. Assemble the accessory mounting support (13) with washers and nuts, with the open side heading to the bottom. (See Pic. 1)
3. Assemble the H.P. trigger gun (05), Hi-Lo-Nozzle (12) and Turbo-Nozzle (06) into the accessory mounting support (13). (See Pic. 2)

Pic. 1



Pic. 2



## 3. Commissioning and Operating

1. Set On / Off switch (11) to position "0".
  2. Assemble the Hi-Lo-Nozzle (12) or Turbo-Nozzle (06) to H.P. trigger gun (05).
  3. Assemble H.P. hose to the H.P. trigger gun (05) and H.P. outlet (09) to the H.P. Cleaner.
  4. Assemble the water supply hose (min. 1/2" diam.) to the water inlet (08) to the H.P. Cleaner.
  5. Connect the AC power cable (01) to the AC power outlet.
- Attention:** By using a AC power extension cable please use a cross wire section of min. 2,5 mm<sup>2</sup>.
6. Open the water supply shut off valve.
  7. Set On / Off switch (11) to position "1".
  8. Adjust the Unloader valve (10) to the desired pressure .
  9. By using cleaning detergent (chemicals): Put chemical suction hose (04) in a cleaning detergent

container. Adjust Hi-Lo-Nozzle (12) to symbol chemical.

## 4. Decommissioning

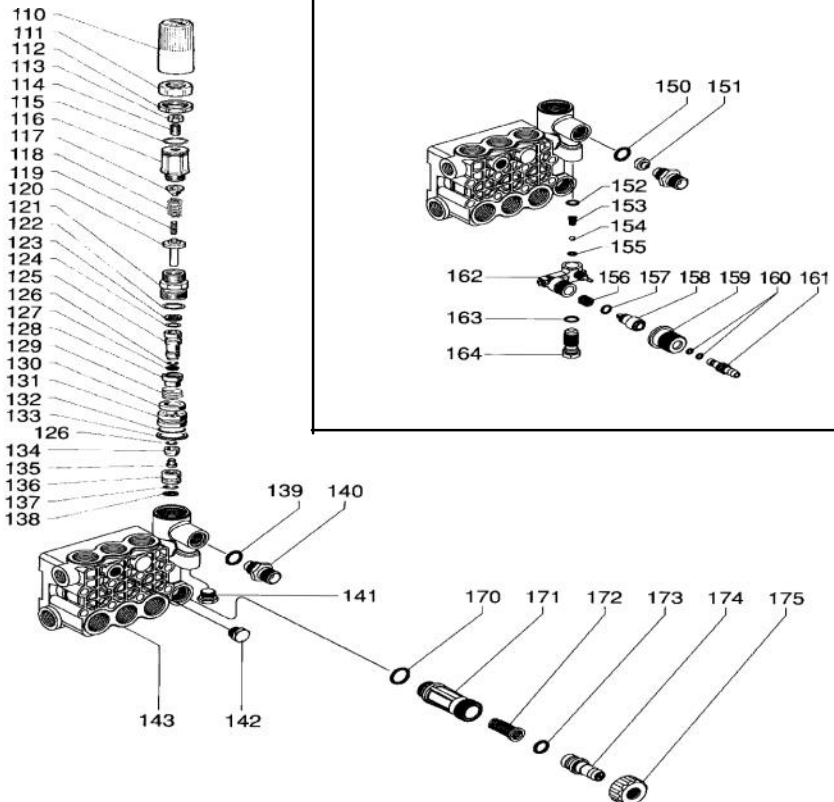
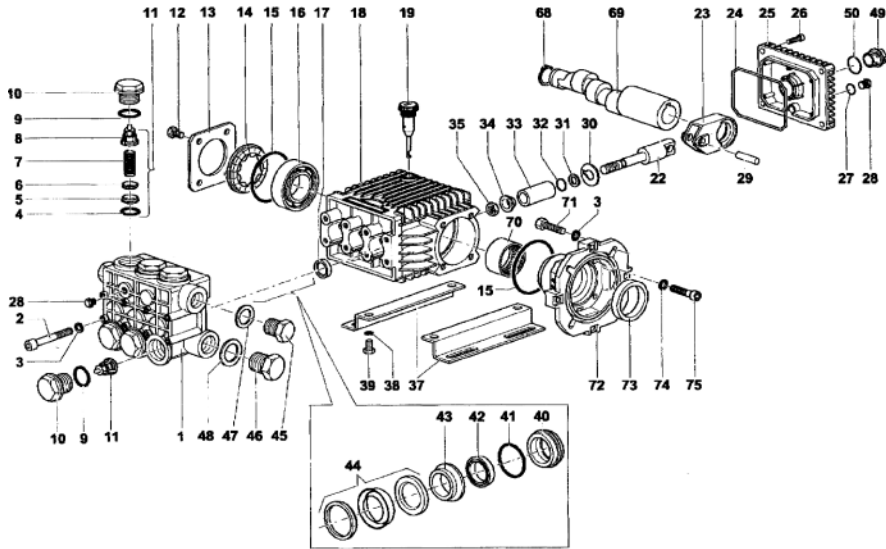
1. Set On / Off switch (11) to position "0". and remove the AC power cable (01) from the AC power outlet.
2. Close the water supply shut off valve.
3. Pull the trigger gun (05) until the H.P. cleaner is pressureless.
4. After finishing the work assemble the accessories to the accessory mounting support.

## 5. Safety Regulation

Please read the Safety regulation "Safety instruction for" H.P. Cleaner (included in the packing).  
Operate the H.P. Cleaner only in horizontal position.  
For resting periods longer than 10 minutes, please switch off the H.P. Cleaner by On / Off switch (11).

# High-Pressure-Cleaning-Systems

## 6. Spare Part List



# High-Pressure-Cleaning-Systems

Ref.	Description	Part-No	Quantity	Ref.	Description	Part-No	Quantity
1	Brass Manifold	44120341	1	110	Knob	36318751	1
2	Screw M8x60 UNI 5931	99319200	8	111	Ring nut	36318670	1
3	Washer 8	96701400	8	112	Nut M28x1,5	92293500	1
4	O-Ring 17,13x2,62	90384100	6 KIT123	113	Nut M8 UNI 5589	92221800	1
5	Valve seat	36200366	6 KIT123	114	Screw M8x20 UNI 5923	99305400	1
6	Valve	36200176	6 KIT123	115	O-Ring 20,35x1,78	90359800	1
7	Spring 9,4x14,8	94737600	6 KIT123	116	Pressure unit	36318570	1
8	Valve guide	36202551	6 KIT123	117	Spring plate	36316970	1
9	O-Ring 20,24x2,62	90384700	6 KIT124	118	Spring	94743600	1
10	Cap M24x1,5x17	98222600	6 KIT124	119	Spring	94734500	1
11	Valve unit	36711501	6 KIT123	120	Lower spring plate	36323370	1
12	Screw M6x10 UNI 5739	99180700	8	121	Bushing guide	36322870	1
13	Crankcase cover	50150074	2	122	O-Ring 23,81x2,62	90385700	1
14	Spacer	44211801	1	123	Security ring	90505200	1 KIT 137
15	O-Ring 55,56x3,53	90409700	1	124	O-Ring 9,13x2,62	90382000	1 KIT 137
16	Roller bearing 6305	91832800	2	125	Control piston	36323470	1 KIT 137
17	Oil seal 18x26x6	90159500	3 Kit 159	126	O-Ring 6,75x1,78	90357500	2 KIT 137
18	Crankcase	63010022	1	127	Security ring	90502500	1 KIT 137
19	Oil dipstick G 3/8	98210300	1	128	Spacer	36323070	1 KIT 137
22	Piston guide	63050066	3	129	Spring 18,5x11	94748500	1 KIT 137
23	Connecting rod	63030022	3	130	Valve	36323151	1 KIT 137
24	O-Ring 101,27x2,62	90392000	1	131	Valve guide	36322970	1 KIT 137
25	Crankcase cover	63160022	1	132	O-Ring 21,95x1,78	90360000	1 KIT 137
26	Screw M6x14 UNI 5931	99183700	5	133	Security ring	90514400	1 KIT 137
27	O-Ring 10,82x1,78	90358500	1	134	Valve	36319066	1 KIT 137
28	Cap G 1/4x9	98204100	1	135	Screw M5x7,5	99150900	1 KIT 137
29	Piston pin 9x27,5	97733500	3	136	Valve seat	36316466	1 KIT 137
30	Washer 9x25x0,5	96707500	3	137	O-Ring 9,92x2,62	90382200	1 KIT 137
31	Security ring	90502200	3	138	Anti-extrusion ring	90506500	1 KIT 137
32	O-Ring 5,28x1,78	90357300	3	139	O-Ring 13,95x2,62	90383200	1 KIT 94
33	Piston 18	44040109	3	140	Nipple M22x1,5	10014770	1
34	Washer 8	44211570	3	141	Cap M14x1,5	98205700	1
35	Nut M8	92221600	3	142	Cap G1/4x9	98204100	1
37	Foot	50200074	2	143	Manifold	63120441	1
38	Washer 8 UNI 1751	96701600	4	150	O-Ring 9,92x2,62	90382200	1 KIT 94
39	Screw M8x16 UNI 5739	99303700	4	151	Nozzle 2,0	10015166	1
40	Packing retainer 18	63080170	3	152	O-Ring 9,25x1,78	90358200	1 KIT 94
41	O-Ring 28,3x1,78	90360800	3	153	Tapered spring, 4,3/7,3x11	94821700	1 KIT 94
42	Packing 18	90265000	3 KIT 161	154	Ball 7/32"	97478200	1 KIT 94
43	Intermediate ring 18	63216170	3 KIT 161	155	O-Ring 5,28x1,78	90357200	1 KIT 94
44	Packing 18	90265400	3 KIT 161	156	Spring 9,75x10	94738300	1 KIT 94
45	Cap G 3/8x13	98210000	1	157	O-Ring 8,73x1,78	90358000	1 KIT 94
46	Cap G 1/2x10	98217600	1	158	Shutter	36256470	1
47	Washer 17,5x23x1,5	96738000	1	159	Knob	36256551	1
48	Washer 21,5x27x1,5	96751400	1	160	O-Ring 4,48x1,78	90357000	2 KIT 94
49	Oil level indicator	63210051	1	161	Coupling hose fitting	36256670	1
50	O-Ring 26,58x3,53	90405100	1	162	Metering body	36318151	1
68	Circlip	90063500	1	163	O-Ring 10,82x1,78	90358500	1 KIT 94
69	Crankshaft	63025265	1	164	Valve seat	36256370	1
70	Needle bearing	91856800	1	170	O-Ring 17,13x2,62	90384100	1
71	Screw M8x25 UNI 5739	99306700	4	171	Nipple water inlet G3/4	36318251	1
72	Flange	10049422	1	172	Filter	92892500	1
73	Oil seal 45x62x8	90169000	1	173	O-Ring 12,37x2,62	90382800	1
74	Washer 6, Schnorr	96693800	4	174	Hose fitting water inlet	36256951	1
75	Screw M6x30 UNI 5931	99191200	4	175	Ring nut	92982800	1
<b>Recommended spare part set</b>							
	Spare part set valves KIT	KIT 94	1	Spare part set sleeves KIT	KIT 161	1	
	Spare part set valves KIT	KIT 123	1	Spare part set KIT	KIT 163	1	
	Spare part set KIT	KIT 124	1	Spare part set KIT	KIT 165	1	
	Spare part set valves	KIT 137	1	Spare part set KIT	KIT 167	1	
	Spare part set seals KIT	KIT 159	1				
<b>Spare part list</b>							
	Motor KD 623	5770	1	Cover	58600000000000	1	
	Motor KD 723	3486	1	HP-Hose 10 m	574601	1	
	Motor KD 740	3487	1	HP-Trigger-gun	58720000000000	1	
	Main switch KD 623	58810000000000	1	Hi-Lo-Nozzle KD 623 / 723	58740000000000	1	
	Main switch KD 723	58820000000000	1	Hi-Lo-Nozzle KD 740	58730000000000	1	
	Main switch KD 740	2949	1	Turbo-Nozzle KD 623 / 723	58790000000000	1	
	Pressure gauge	58710000000000	1	Turbo-Nozzle KD 740	58750000000000	1	
	Wheel	5869	2				