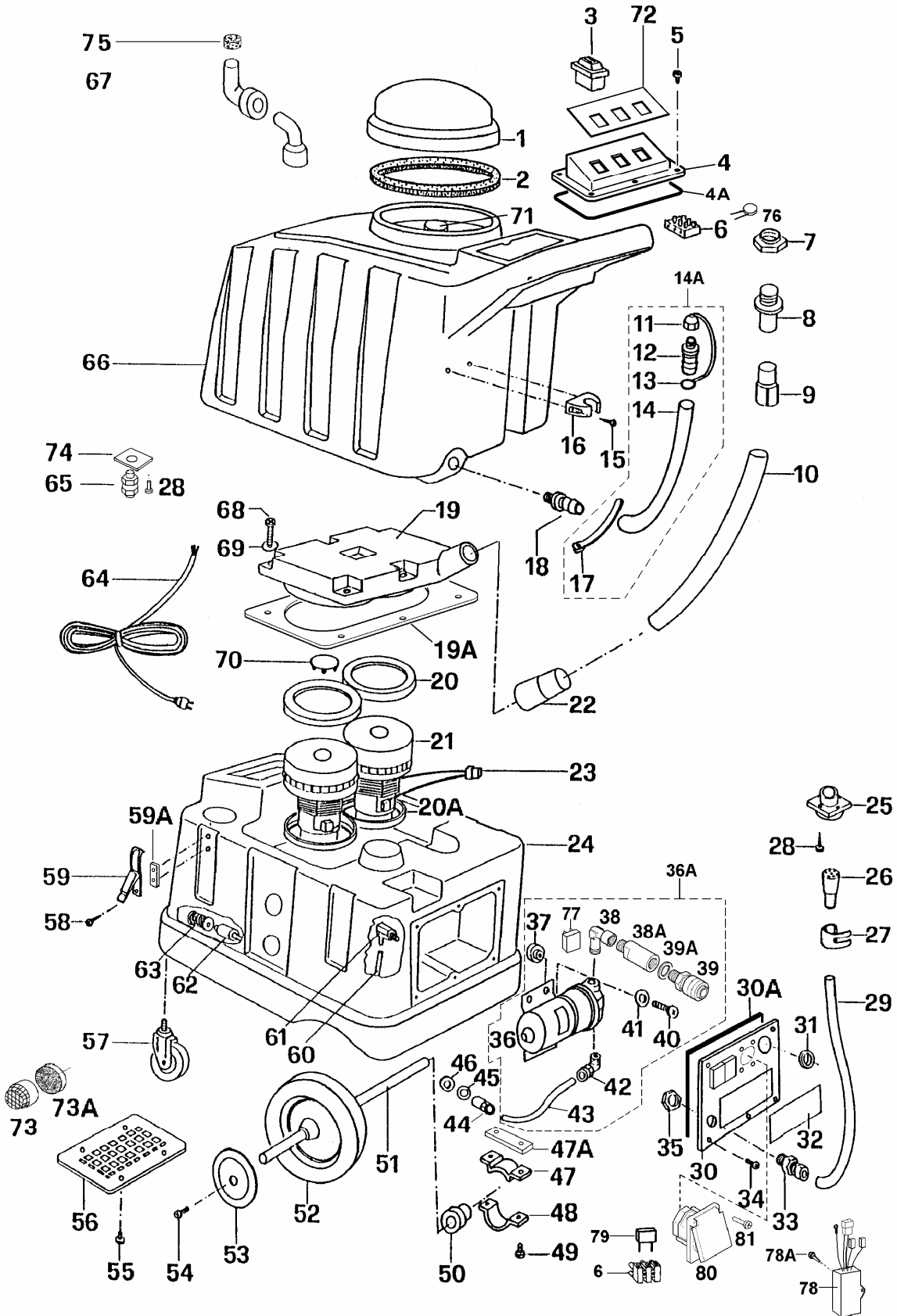


Grace



INJECTION-EXTRACTION MACHINE MOD. GRACE

TABLE 11 1/2

rif.	codice	description
1	178	COVER
	178C	COVER WITH GASKET
2	179	GASKET
3	217	2 POSITIONS SWITCH
4	176	PANEL
4A	128	UPPER PANEL GASKET
5	551	STAINLESS STEEL SCREW TC+ 4x16
6	2361	CONNECTING TERMINAL
7	548	RING NUT
8	365	HOSE NIPPLE
9	334	CUFF D. 38
10	364	VACUUM HOSE D. 38
11	159	CAP
12	161	HOSE NIPPLE
13	162	TIE
14	358	DRAIN HOSE
14A	358C	COMPLETE DRAIN HOSE : COD. 161+541+358+162+159
15	544	SCREW 4,2x22
16	160	CLIP
17	541	TIE
18	161	HOSE NIPPLE
19	155N2	MANIFOLD
19A	1551	GASKET FOR GRACE MANIFOLD/TANK
20	825	MOTOR GASKET 3mm
20A	812	MOTOR GASKET 10mm
21	808	MOTOR 3 STAGES 1300W 240V 50/60Hz
	809	MOTOR 3 STAGES 1300W 120V 50-60Hz
	810	MOTOR 3 STAGES 1300W 100V 50-60Hz
22	363	CUFF
23	234	PLASTIC CONNECTOR
	250	MALE FASTON – 6,3mm
24	152AZ	BLUE LOWER TANK
24	152V	GREEN LOWER TANK
25	259-GRACE	SOCKET WITH WIRES
26	261-GRACE	CABLE SHEATH WITH WIRES +COD.260+265
27	265	TIE
28	538	SCREW TC+ 3,9x13
29	261	CABLE SHEATH
30	148G	LOWER PANEL FOR GRACE(WITHOUT HOLE FOR PLUG 2690)
	148SG	LOWER PANEL FOR GRACE (WITH HOLE FOR PLUG 2690)
30A	186	PANEL GASKET
31	163	BUSH
32	157	PLATE
33	262	CONNECTING PART
34	536	STAINLESS STEEL SCREW TC+ 4x10
35	564	RING NUT
36	643	PUMP 220-240V 50-60 Hz 100 PSI+ RECTIFIER 27935
	644	PUMP 100-120V 50-60 Hz 100 PSI (INTERNAL RECT.)
36A	643C-M	PUMP 220-240V 50-60 Hz 100 PSI+ RECTIFIER 27935 + FITTINGS + METAL COUPLING
	643C	PUMP 220-240V 50-60 Hz 100 PSI+ RECTIFIER 27935 + FITTINGS + PLASTIC COUPLING
36A	644C-M	PUMP 100-120V 50-60 Hz 100 PSI (INTERNAL RECT.) +FITTINGS + METAL COUPLING
	644C	PUMP 100-120V 50-60 Hz 100 PSI (INTERNAL RECT.) +FITTINGS + PLASTIC COUPLING

INJECTION-EXTRACTION MACHINE MOD. GRACE

rif	codice	description
37	736	OLD TYPE VIBRATION DAMPING (FLOJET)
	7360	NEW VIBRATION DAMPING (SHURFLO)
38	720	ELBOW
38A	753	EXTENSION FOR METAL COUPLING
	721	EXTENSION FOR PLASTIC COUPLING
39	687-PE	QUICK DISCONNECT FEMALE - METAL
	728	QUICK DISCONNECT FEMALE - PLASTIC
39A	1371	GASKET FOR COUPLING 687-PE
40	504	SCREW TC+ 5x20 (OLD TYPE: FOR FLOJET)
40	546	SCREW TC+ 5x25 (NEW TYPE: FOR SHURFLO)
41	517	WASHER 5x15
42	622	ELBOW
43	746	RILSAN PIPE
44	714	QUICK DISCONNECT FEMALE
45	540	BRASS WASHER
46	147	NEOPRENE WASHER
47	420	UPPER BEARING FLANGE
47A	4270	PLATE
48	421	LOWER BEARING FLANGE
49	583	SCREW TE 8x20
50	419	PILLOW BLOCK
51	418	SHAFT
52	422	WHEEL
53	5632	WASHER 6x30x2 Zn
54	582	STAINLESS STEEL SCREW TE 6x14
55	536	STAINLESS STEEL SCREW TC+ 4x10
56	180	LOWER PANEL
57	115	WHEEL
	597	WASHER DIAM. 20x40x3
	540	BRASS WASHER DIAM. 10x20x0.8
58	545	SCREW
59	142	COUPLER
59A	167	PLATE
60	745	EXTRAFLEX PIPE
61	702D	CONNECTING PART
62	747	BALLAST
63	608	FILTER
64	2091	CABLE 3x2,5x10M. COMPLETE WITH EURO PLUG
65	295	FAIRLEAD WITH NUT
66	151AZ	BLUE UPPER TANK
66	151V	GREEN UPPER TANK
67	131	ELBOW
68	560	SCREW STAINLESS STEEL TC+ 5x30
69	5171	STAINLESS STEEL WASHER 5x15
70	824	MOTOR VALVE
71	183	ELBOW
72	181	LABEL
73	11638	PLASTIC FILTER
73A	2025	FILTER PPI30 D.44
74	109	FAIRLEAD PLATE
75	188	VACUUM FILTER
76	8132	VARISTOR FOR PUMP
77	27935	EXTERNAL RECTIFIER FOR SHURFLO PUMP
78	290	PUMP RADIO INTERFERENCE SUPPRESSOR
78A	538	SCREW TC+ 3,9x13
79	235	MOTOR RADIO INTERFERENCE SUPPRESSOR
80	2690	ELECTRICAL OUTLET FOR EURO PLUG
81	538	SCREW TC+ 3,9x13